



THE INFORMER



FIELD TRIP TO
LARREMORE RANCH

SEE DETAILS PAGE 3

INSIDE THIS
ISSUE:

PRESIDENT'S REPORT	1
THANKSGIVING AT BIG BEND AREA. FIELD TRIP	2, 3
EDITOR'S NOTES BIRTHDAYS &	4
UPCOMING EVENTS AND SHOWS	5
CHRISTMAS PARTY SHOP REPORT	6
OFFICERS, AND CHAIR- PERSONS	7

DUES NOTICE
ITS TIME TO
PAY YOUR DUES
DON'T GET LEFT
OUT



From the Front Desk— President —Bob Patterson



2008 has been a pretty good year for our club. Our group seems to be generally hale and hearty in spite of all the political hype and bad financial news.

Our club seems to be buzzing along on a fairly even keel. During the year we had a good show and our financial condition is in good shape. But there are some things that should be considered. A committee is needed to look over our clubhouse and work shop with an eye to needed improvements.

Self improvement and discovery are the most important aspects of our organization. The lapidary shop, the metal shop and classroom all provide a magnet for new members and give our other members an outlet for self improvement as well as an opportunity to share their skills. There are still many ways we can improve our skills and our club and it is the responsibility of all of us to work to that end.

Now as a new year approaches it is time to look forward to new challenges. New programs, classes, field trips and other things to make our group activities more interesting and rewarding. I am sure that you can see some areas that exist for improvement. I hope you will not hesitate to bring these to the next meeting.

I am sure that you all probably noticed during the Christmas Party that we had a house full of people that all seemed to be having a good time. I know I did. However, don't forget our members that were not there for whatever reason.

Also, remember the show is in April and now is not to soon to be preparing for It, Sally Lightfoot has been doing a great job of managing the show and I am sure she will welcome any volunteered assistance.

Lets all work to improve our club and make the coming year the best yet.

Merry Christmas and Happy New Year To All,
Bob Patterson

A THANKSGIVING VISIT TO THE BIG BEND AREA



For a Thanksgiving Holiday Bob and Helen Patterson joined Bill and Kathy Gilles in Alpine, Texas on Tuesday November 25. Gilles had gone to Alpine on the previous weekend with other friends from the Lockheed Rock Club of Fort Worth, Texas. Bill and Kathy Gilles are residents of Weatherford, Texas and are currently members of the CTGMS.

Helen and I had recently traded our fifth wheel trailer and wanted to try the new unit. All went fairly well with the exception of a tire that gave up the ghost in Ft Stockton, TX on the evening of Nov 24. We spent a good part of Tuesday getting the tire and wheel replaced.

That is par for the course, if you can't stand tire trouble you had better stay away from trailer traveling.

We met Bill and Kathy in Alpine, Texas at noon on Tuesday and after filling up on Alicia's burritos we all went on to Study Butte and checked into the Study Butte RV park. This is the first time we have stayed there and were very pleased with the place as it was reasonably priced and you can pretty well do as you please without bossy rules.



The next day we went to a location on the Agua Fria road with Hans Luett to try our luck. Bill and Kathy had been there previously and had found some dino bone. We found some rocks which were mostly petrified wood. Bill and Kathy scaled the hills and found some large sections of good petrified wood.

Thursday being Thanksgiving day, Helen went through her usual process of cooking a turkey with all the trimmings. Some of you have participated in her feasts and know how wonderful they are. Since we were only going to have six for the meal we invited another couple in the park from Illinois to join us. Hans Luett and his sister Lelo rounded the group out to eight. The day was warm and we all had dinner outside under our trailer awning. Everyone and our two dogs feasted their limit and spent the rest of the day recovering.

On Friday Bill wanted to make a trek to Needle Peak and we agreed since we both had four wheel drive pickups which as it turned out were badly needed. We found the roads in terrible condition and we also had to drive about three miles up the creek bed. Due to the recent heavy rains and flooding we found all of the area badly washed and in terrible condition. We persisted and got into the rock hunting area about noon. Apparently, no one had been into this area for four or five years.

Helen and I hunted the washes on the lower levels and found several nice rocks, one of which was a beautiful fluorescent mineral group. Bill and Kathy were able to scale the higher part of the mountain and they found many beautiful agates in an old digging area that I told them about.

A THANKSGIVING VISIT TO THE BIG BEND AREA..cont.

Late in the evening we went out the western trail and managed to get out ok. This route was shorter and somewhat better than the way we went in. We had a good day. Bill and Kathy went back the next day and came out with lots of outstanding finds. Helen and I didn't join them and spent the day visiting Lajitas, sightseeing and taking pictures. We also visited the Many Stones rock shop and plant store and had a very pleasant day. The next day, Sunday, we all left and started home after visiting Hans' rock shop in Study Butte and selecting some good agate...

We had a fine time visiting all our friends and sightseeing in the area and considered our trip successful. I would recommend this trip to any one as a nice place to visit in the fall and winter as it is warm with nice scenery and some good rock hunting. Hans is a very congenial person and will usually take a small group out on a rock hunt. This also an excellent area for photographers, hikers and sightseers. There is always something new, unexpected, and interesting in the Study Butte area.

Submitted by: Bob Patterson



CTGMS FIELDTRIP

Part of the Larremore Ranch, which just across from Elephant Mountain about 35 miles South of Alpine on highway 118, will be changing hands this spring. As the new owners will no doubt not allow rockhounds on the ranch, and have no interest in rocks, the Larremores would like to hold a special rockhunt on Saturday, January 10, 2009 to sell off all the rocks they have collected over the years and allow folks to find their own.

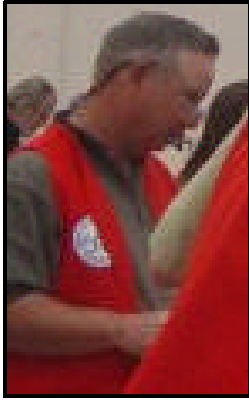
The cost for this rockhunt would be \$5 per person and 75 cents per pound for good agate and geodes. As this would be a Rollin' Rock Club field trip, you would need to join the RRC if you don't already belong. Of course, if another club wishes to make it an official field trip, members of that club won't have to join the RRC. The meeting place and time will be the Antelope Lodge on the south side of Alpine on Hwy 21 (white building complex on the left on your way south out of town) at 8AM Saturday. I recommend you dress in layers and wear sturdy shoes and blue jeans. Bring a hat, gloves, geology pick, shovel, crow bar, crack hammer, chisel, screens, camera, buckets, packing material for your specimens, drinks and food to eat in the field as we will dig all day or as long as permitted both days. We will get together in Alpine for dinner each evening for those who want to.

If you are interested, please email Teri Smith, agatehunter@sbcglobal.net. As for hotels, of course I rec-

ommend the Antelope Lodge. Our reservation number is (800) 880-8106, and our website is www.antelopelodge.com. If we fill up or people don't care for the lodge (some people prefer a new motel with inside corridors, etc.) the official Alpine website is <http://visitorcenter.alpinetexas.com/index.php>.



The Texas Parks and Wildlife Department has acquired 7000 acres of land to add to the Big Bend Ranch State Park. The land was purchased by the Nature Conservancy at for about \$2.6 million. This addition will give visitors access to all of Fresno Canyon.



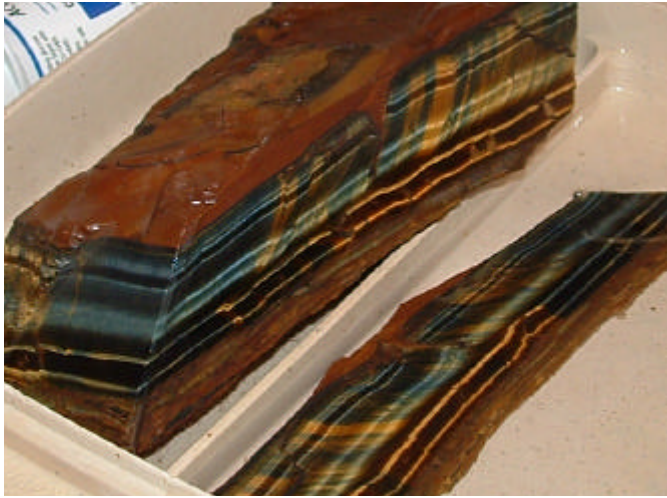
Editor's Notes:

++++
 If you have a story or a news item please email it to me at ctgms50@yahoo.com

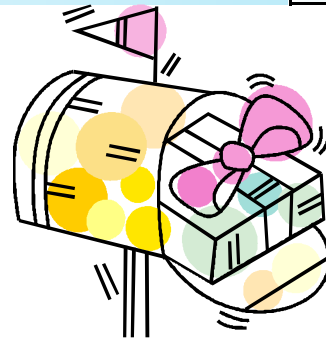
Send it in email or as a Microsoft Word document attachment. Remember to get it to me by the 20th of the month.

Many thanks to Bob and Helen Patterson for having the newsletter printed each month.

Those of you that missed the Christmas Party, missed a wonderful time with over 40 of your friends. There was plenty of wonderful food and many good gifts. After eating from the buffet, I could hardly walk out the door! I would to thank whoever brought the piece of South African Blue Tiger Eye. The slabs are absolutely beautiful!



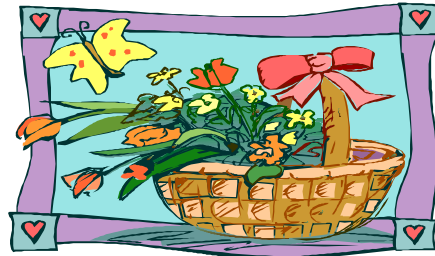
Purple sage and a beautiful moonrise near Dryden, Texas. Who says the desert isn't beautiful?



BIRTHDAYS

Glenda Denison	January	5
Joe Turnbow	January	6
Julie McCray	January	22
James Graves	January	30
Arabel Mullen	January	30

GET WELL SOON!



- Ernie Wright**
- Bobbie Owens, recovering from shoulder surgery**
- Charlie Harrison, back problems**
- Ian Johnson, kidney tumor surgery pending**
- Judy Abernathy's son, Jay, Needs heart/lung transplant**
- Lou David's granddaughter, Sierra, back in hospital**



Upcoming Shows

Jan 2-11--QUARTZSITE, ARIZONA: Show, "Tyson Wells Rock & Gem Show"; Tyson Wells Enterprises Inc.; Tyson Wells Show Grounds, 100 W. Kuehn St.; 9-5 daily; free admission; contact Kym Scott, P.O. Box 60, Quartzsite, AZ 85346, (928) 927-6364; e-mail: tysonwells@tds.net; Web site: www.tysonwells.com

Jan 17-18, 2009—FREDERICKSBURG, TX: 40th Annual Hill country Gem, Mineral, and Fossil Show; Fredericksburg Rockhounds; Ladybird Johnson Municipal Park, highway 16 three miles south of Fredericksburg. Children-friendly demonstrations and games, vendors, displays, hourly door prizes, raffle, food and drinks. For info: <fredericksburgrockhounds.org>; or Jeff Smith, 830-895-9630, jeffbrenda@krc.com; or John Crone, 830-990-9823, jcrone@austin.rr.com

Jan 31 through Feb--14--TUCSON, ARIZONA: Show, "Arizona Mineral & Fossil Show"; Martin Zinn Expositions; The InnSuites Hotel, 475 N. Granada, and The Mineral & Fossil Marketplace, 1333 N. Oracle Rd., and Quality Inn, 1025 E. Benson Highway, and Ramada Ltd., 665 N. Freeway; 10-6 daily; free admission; more than 400 dealers from all over the world, free shuttle bus to other shows, Artists' Gallery at the InnSuites Hotel; contact Martin Zinn Expositions, P.O. Box 665, Bernalillo, NM 87004-0665, fax (505) 867-0073; e-mail: mz0955@aol.com; Web site: www.mzexpos.com

Jan 30-Feb 10, 2009—TUCSON, AZ: J.O.G.S. Gem & Jewelry Show, Tucson Expo Center. For more information: www.jogshow.com

Feb 7-8--ROBSTOWN (CORPUS CHRISTI), TEXAS: 47th annual show; Gulf Coast Gem & Mineral Club; Richard M. Borchard Regional Fairgrounds, U.S. 77 and Rte. 44; Sat. 10-6, Sun. 10-5; adults \$5, children under 12 free; minerals, fossils, jewelry, kids' wheel, silent auction, door prizes, dealers and demonstrations; contact Jerrold Simpson, (361) 851-8788

Feb 21-22--PASADENA, TEXAS: Show; Clear Lake Gem & Mineral Society; Pasadena Convention Center, 7902 Fairmont Pkwy.; Sat. 10-6, Sun. 10-5; adults \$5, students \$1, children free; contact Al Pennington, (281) 481-1591; e-mail: clgms2009@hotmail.com; Web site: www.hawkwindnovels.com/page2.html

Feb 21-22, 2009—PLAINVIEW, TX: 47th annual show; Hi Plains Gem & Mineral Society; Ollie Liner Center, south I-27; Sat. 10-6, Sun. 10-5; adults \$2, students \$1; dealers, demonstrators, door prizes, silent auction, kids' wheel; contact Mildred Matlock, 701 Zephyr, Plainview, TX 79072, (806) 293-3476, (806) 293-3476; e-mail: jmmlatlock@suddenlink.net

Mar 21-22, 2009—SAN ANTONIO, TX: 48th Fiesta of Gems show; Southwest Gem and Mineral Society; Live Oak Civic Center, 8101 Pat Booker Road; Saturday 10am-6pm, Sunday 10am-4pm; admission is \$4 Adults, \$3 seniors and military, \$2 students; www.swgemandmineral.org

PO Box 7343
 Abilene, TX 79608-7343

Editor: Gary Hudson
 Email: ctgms50@yahoo.com

**We are on the web:
www.txol.net/rockclub**



CLUB OFFICERS FOR 2008

President	Bob Patterson	325 698-8648
Past President	Gary Hudson	325 554-7804
Vice President	Carlos Talley	325 692-0063
Secretary	Beverly Vargo	325 690-0750
Treasurer	Errol Rutledge	325 672-7505
Corresp Sec	Joyce Talley	325 692-0063
Editor	Gary Hudson	325 554-7804

Committees/Chairpersons

Show	Sallie Lightfoot
Field Trips	Tony & Judy Steele
Classes	Charlie Lightfoot
Nominating	James Grant
Programs	Dave Vargo
Shop	Tim Walker
Club House and Grounds.....	Charlie Lightfoot
Dealers for show	Tony & Judy Steele
Budget	Errol Rutledge

GEMSTONE OF THE MONTH

GARNET



Garnet is the modern January birthstone and the gem designated for the 2nd and 6th wedding anniversary

There are no known enhancements for garnet, it occurs in every color of the spectrum, except blue. Any of these colors is permissible to wear as the January birthstone.

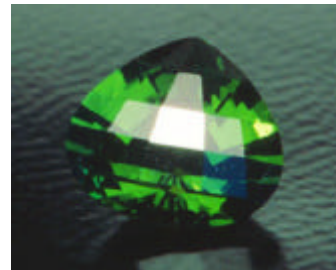
The name Garnet appears to originate with the Latin granatum malum which means pomegranate. Pomegranate is the name of the bush which produces a red fruit with seeds. Jewelry made with garnet has been found as early as the Bronze Age (3000 BC) in burial sites. It is thought that early communities valued garnet and believed that it offered protections in the afterlife.

Legends, Myths and Healing Properties:

During the Middle Ages primitive cultures believed that the red stones would stop bleeding. Many early cultures believed that garnets were helpful in preventing and curing blood disorders and infections.



MANDRIAN GARNET



**TSAVORITE/
 GROSSULAR
 GARNETT**



JANUARY FLOWER

CARNATION

MISSION STATEMENT

The Central Texas Gem and Mineral Society is a non-profit organization dedicated to the study of rocks, minerals and fossils. We offer field trips and provide educational opportunities and instruction to members in a variety of areas related to the Lapidary Arts and Jewelry making. We also award a scholarship to a student enrolled at a local college in a field closely related to geology. We provide educational displays related to this hobby at shows of a similar interest. — Jerry