



THE
INFORMER



**INSIDE THIS
ISSUE:**

EDITOR COMMENTS AND SCHOLARSHIP WINNER	1
SCHOLARSHIP WINNER AND BIRTHDAYS	2
UPCOMING SHOWS	3
SHOW FLYER	4
PRESIDENT'S REPORT	5
BEV'S MINUTE BY MINUTE	6,7
OFFICERS, AND CHAIRPERSONS	8



Editor's Notes:

"Remember, if you don't send me news I can always make up some."

... Jerry Davis

+++++

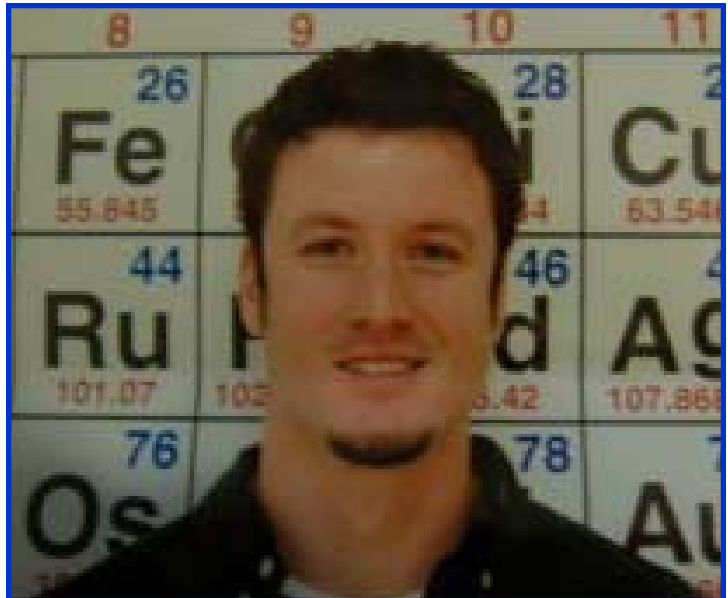
If you have a story or a news item please email it to me at

jde@txol.net.

Send it in email or as a Microsoft Word document attachment. Remember to get it to me by the 20th of the month.

This month we honor Scholarship winner, Noel Court. Congratulations Noel. Thanks to JoAn Wilks and her committee for their work in making selections for this honor.

Scholarship Winner
Noel Court



Central Texas Gem and Mineral Society's 2008 Scholarship Recipient

Noel Court is an outstanding scholar at Hardin Simmons University.

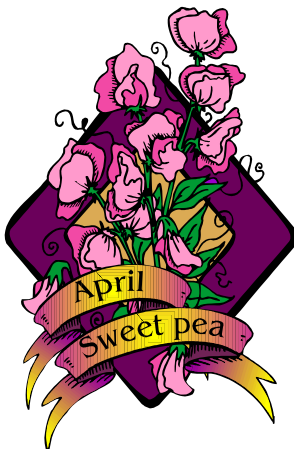
Noel comes highly recommended for this scholarship by Dr. Mark Ouimette, Department of Geological Sciences,

at Hardin Simmons University. Dr. Ouimette writes

"Noel Court has my highest recommendation for your scholarship. I believe he will represent your Society very well. He is a credit to his family and to Abilene.

Because of Noel's out-

(Continued on page 2)



Scholarship Winner

(Continued from page 1)

standing academic work, professional conduct as engaged geosciences professional and because of his patriotism, Noel will be the Hardin Simmons Geology Department's winner of the **Dr. and Mrs. Scotty Holland Medal** in the spring of 2008."

Noel is a veteran who served in Iraq with the Texas Army National Guard.

Noel grew up in Abilene, graduated from Cooper High School. He is married. He and his wife Kelly live here in Abilene. He is employed by Lowthor Environmental Consulting doing environmental studies for animal feed lots, dairy farms, oil companies planning of water pollution prevention and other environmental studies in Texas.

Noel will graduate May 10, 2008 with a 4.0 GPA.

We the members of Central Texas Gem and Mineral Society are pleased to honor Noel with this award. We wish him great success in his career.

Congratulations Noel.

Submitted by JoAn Wilks



BIRTHDAYS

Sally Maxson	April 1
Chel Harrison	April 9
Lisa McCarty	April 17
Dave Vargo	April 17
Rosstin Ward	April 17
Mike McCarty	April 19
Lyndell Lacey	April 20
Harry Dhans	April 25

ANNIVERSARIES

Carlos and Joyce Talley	April 13
Charley and Ann Harrison	April 20
Ricky Alaniz	April 25
Henry Martin	April ?

ILLNESSES/RECOVERIES

- Ernie Wright
- Elaine Hudson—recovering from knee surgery.
- Bud Trammel—recovering from skin graphs to leg injuries.
- Jerry Davis—recovering from surgery

Editor note: Thanks to Bob and Helen Patterson for printing copies of the Informer and delivering them to the club house.

UPCOMING SHOWS

April 2008

12-13-ABILENE, TEXAS: Show; Central Texas Gem & Mineral Society; Abilene Civic Center, N. 6th and Pine; Sat. 10-6, Sun. 10-5; adults \$3, children 6-12 \$1.50, children under 6 free with adult; gems, jewels, slabs, rough, lapidary tools and supplies, demonstrations, fluorescent display, silent auction, wheel of fortune, "sand" art, hourly door prizes, grand prize drawing; contact Sallie Lightfoot, (325) 692-4642; e-mail: slightfoot@aol.com; Web site: www.txol.net/rockclub



Show Chairperson, Sallie Lightfoot, on a field trip to Big Bend area.

18-20-MARFA, TEXAS: Show, "Big Bend Gem & Mineral Show"; Chihuahuan Desert Gem & Mineral Club; AmVets Bldg., 300 S. Highland (Hwy. 67 S.), across from Marfa Bank, south off of Hwy. 90; Fri. 10-6, Sat. 10-6, Sun. 11-5; free admission; gemstones, minerals, jewelry, fossils; contact Paul Graybeal, (432) 729-4526; e-mail: paulgraybeal@sbcglobal.net

May 2008

2-4-DALLAS, TEXAS: 2nd annual show, "Dallas Fine Mineral Show"; Dave Waisman; Embassy Suites, 14021 Noel Rd., near The Galleria; Fri. 10-6, Sat. 10-6, Sun. 10-5; free admission; contact Dave Waisman, P.O. 8543, Spokane, WA 99203, (509) 458-2331; e-mail: svldave@aol.com; Web site: www.dallasfinemineralshow.com

3-4-LUBBOCK, TEXAS: 50th annual show; Lubbock Gem & Mineral Society; Lubbock Civic Center, 1501 Mac Davis Ln.; Sat. 10-6, Sun. 10-5; exhibits, dealers, gems, jewelry, findings, rocks, minerals, fossils; contact Archie Scott, (806) 894-1584, or Ed Ries, (806) 799-2722

Abilene Civic Center



proudly presents



the 2008 GEM & MINERAL JEWELRY Show

(PETRIFIED WOOD, LAPIS, AMETHYST, AGATE, TURQUOISE, OPAL, DINOSAUR BONE, etc)

Saturday, April 12, 2008
10A.M. to 6P.M.

Sunday, April 13, 2008
10A.M. to 5P.M.

Abilene Civic Center
Downtown Abilene, N 6th & Pine

- * Fossils
- * Jewelry
- * Gems
- * Minerals
- * Jewelry Making
- * Fluorescent Display
- * Glass Bead Making
- * Exhibits
- * Lapidary Supplies
- * Beads
- * Crafts
- * Gifts.....all prices
- Demonstrations-Lapidary, Silversmithing, Wire Craft, Carving, Faceting, Beading


» SILENT AUCTION » WHEEL OF FORTUNE
» GEODES – to purchase and have opened » “SAND” ART

Hourly door prizes for adults.....Hourly door prizes for children

GRAND PRIZE – \$100

“Everyone is Welcome”

Profits help support the CTGMS Educational Scholarships



50¢

off adult ticket

valid at the 2008 Gem & Mineral Show
Abilene, Texas

ADMISSION:

Adults \$3
Children \$1.50 (6 to 12 yrs)
Children under six free when accompanied by an adult

Note: RRC meets Sunday at 9 am
At the Civic Center

Check us out: www.txol.net/rockclub

From the Front Desk— President —Gary Hudson



Hello everyone!

It seems like the Show is on everyone's mind. This is our largest fundraiser, so get the word out! There are flyers at the club house and can be down loaded off the web site. Invite all your friends, relatives, co-workers, and anyone else you can think of. We need everyone's help to make the show a big success. Call Sally or myself to find out what you can do.

I am inviting all my grandkids and their parents. It is very satisfying to see those eyes light up with all the pretty stuff at the show.

I just love this time of the year. Everything is turning green and the fruit trees are blooming. The bees are humming and the birds are singing. Of course that means the dreaded thunderstorms will be passing our way. I enjoy sitting on the porch and watching the Lord's light show. It sure makes our human made stuff kind of pale in comparison.

I'm headed southwest for a few days. I need to visit with nature and maybe find some fossils or Indian artifacts. Some plants will be blooming to my delight.



Well it's time to go for now. See you at the Meeting.

Gary

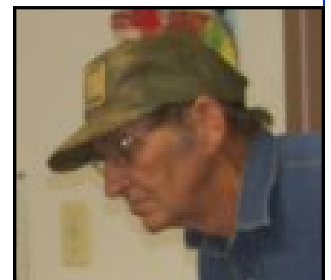
The Shop Report — Foreman - Tim Walker

WE HAVE SAW OIL FOR SALE IF ANYONE NEEDS SOME. IT IS CANOPUS 13. BRING YOUR OWN CONTAINER AND \$10 PER GALLON.

If you want to buy oil for your saws, see Gary Hudson. Rules for the shop are posted on the shop wall.

Note from Bob Patterson:

Tony Steele and Don Brenholtz got the bearings and wheel installed on the blue machine and it is working well.





MINUTE BY MINUTE BY BEV

Minutes of CTGMS meeting of Monday, March 10, 2008

The regular business meeting scheduled Monday March 5th was not held because not enough members attended to make a quorum. The meeting was rescheduled for the 10th.

President Gary Hudson called the meeting to order. 37 members were in attendance. After the opening prayer and pledge of allegiance, minutes of the February meeting were read and approved. Errol arrived a little late so the Treasurer's report was read later in the meeting.

The Treasurer's report was accepted as read.

Old Business: Ernie Wright has indicated to Gary that he's hoping his insurance will pay for the repairs to his shed roof. Gary still has the funds that were donated by club members. If the money is not needed for the repair the funds will be reimbursed to the donors.

No new business was brought before the members.

Committee Reports were as follows:

Show Chair: Sallie Lightfoot announced that we still need people to volunteer for various positions for the show. We really need someone to head the dealer dinner. There are a few slots to fill at the front door, and we need people to work the child sand art and adult sand art tables.

We also need a few projects for the raffle cases and children's door prizes. Please bring any donations you have for the silent auction. Carlos has asked for volunteers to help make stands for the picture rock that will be sold at the silent auction. He has some examples at the clubhouse.

Sallie has placed ads for the rock show in the Abilene Reporter News and the American Classifieds and has placed an on-line ad at KRBC.

Sallie would like people to come to the clubhouse Monday night March 31st to help stuff the envelopes to send show fliers to the people on our mailing list.

Geodes:

Tony Steele reported that he has purchased the geodes. He spent almost all of the \$1,200 budgeted last




MINUTE BY MINUTE BY BEV**Minutes of CTGMS meeting of Monday, March 10, 2008, continued**

month. He said we may be able to get the geodes delivered, but if not, the cost of shipping will be about \$100.

Dealers:

Judy Steele indicated that she has nine confirmed dealers and two demo dealers for the show this year.

Club cases:

Finally, if you want to use any of the club's cases for your display at the show, please contact Charlie Lightfoot.

Scholarship Chair: JoAn's mother has been ill, so Jo An was not at the meeting, but she asked Gary to report that we do have a scholarship recipient. He is a student at Hardin Simmons and JoAn is making arrangements for presentation of the award at the dealer dinner.

Illnesses and deaths: Jerry Davis has recently had surgery. Marlene Bilberry's brother passed away recently. His funeral was March 10th. Sallie volunteered to ask Marlene where the club could send a memorial contribution on behalf of the club. Tony Steele reported that Bud Trammel would not be at the rock show this year because of his legs.

Refreshments:

Gary Hudson, Helen Patterson and Lisa McCarty will provide refreshments for April's meeting.

There was no further business and the meeting was adjourned.

Secretary, *Beverly Vargo*



PO Box 7343
Abilene, TX 79608-7343

Editor: Jerry Davis
Email: jde@txol.net

We are on the web:
www.txol.net/rockclub

CLUB OFFICERS FOR 2008



President	Gary Hudson	325 554-7804
Past President	Calvin Donaghey	325 695-1508
Vice President	Dave Vargo	325 690-0750
Secretary	Beverly Vargo	325 690-0750
Treasurer	Errol Rutledge	325 672-7505
Corresp Sec	Joyce Talley	325 692-0063
Editor	Jerry Davis	254 643-4586

Committees/Chairpersons

Show	Sallie Lightfoot
Field Trips	Tony & Judy Steele
Classes	Charlie Lightfoot
Nominating	James Grant
Programs	Dave Vargo
Shop	Tim Walker
Club House and Grounds	Charlie Lightfoot
Dealers for show	Tony & Judy Steele
Budget	Errol Rutledge
Scholarship	JoAn Wilks
Show Demonstrations	Jerry Davis
Silversmithing Classes	Jerry Davis

GEMSTONE OF THE MONTH



A round brilliant cut diamond set in a ring.

Diamond is the hardest known natural material. Mining is done by crushing the ore and before the time of x-ray fluorescence the diamonds were removed by passing over a grease belt. Diamonds stick to grease more readily than other minerals do.

Diamond bearing rock is brought to the surface by deep volcanic action. (See illustration) When volcanic pipes cool, they sometimes contain diamond bearing material.

After much weathering of the magma of the volcanic pipe, alluvial deposits may contain the diamond material or at least indicator miner-

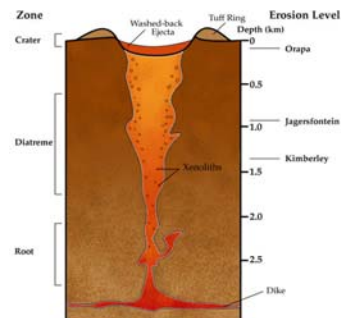
MISSION STATEMENT

The Central Texas Gem and Mineral Society is a non-profit organization dedicated to the study of rocks, minerals and fossils. We offer field trips and provide educational opportunities and instruction to members in a variety of areas related to the Lapidary Arts and Jewelry making. We also award a scholarship to a student enrolled at a local college in a field closely related to geology. We provide educational displays related to this hobby at shows of a similar interest. — Jerry



Rough diamond in natural matrix. Notice the lustrous surface of faces of the diamond.

als that lead back to the source.



ARTICLES FOR THE NEXT MONTH'S NEWSLETTER MUST BE SUBMITTED BY THE 20TH OF EACH MONTH.